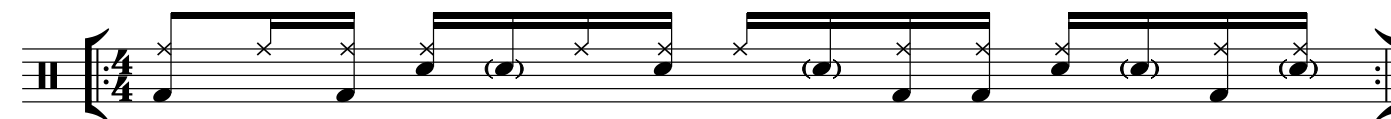


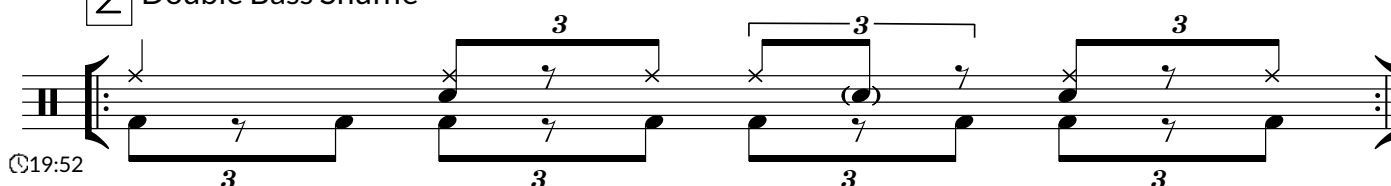
Danny Seraphine Iconic Grooves & Fills

1 Jazz Rock Groove



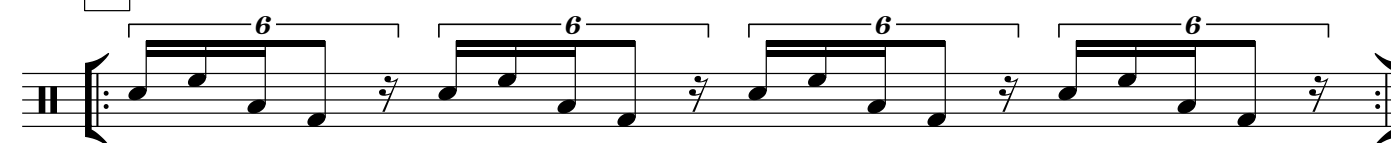
14:00

2 Double Bass Shuffle



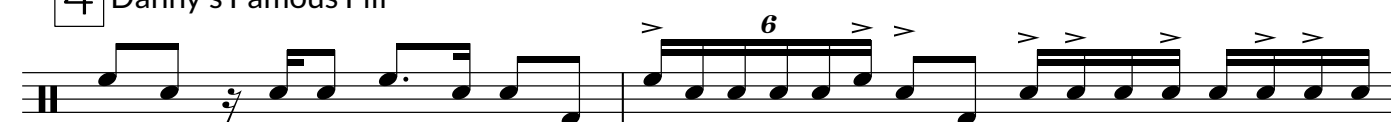
19:52

3 "Old Days" Fill



26:57

4 Danny's Famous Fill



29:18

R L L R R L R F R L R L R L R F R L R L R L R L



R R L R R L R R L R R L R F R L R L R L R L R L R L R L R L

5 19/8 Groove

Musical notation for '19/8 Groove' on a single staff. The time signature is 19/8. The notation consists of a series of eighth notes, some beamed together, with 'x' marks above them. There are two accents (>) over the first and second measures. The piece ends with a repeat sign. Below the staff, the rhythm is transcribed as: R L R L R R L R L R R B B R B B R B B R B R B B R B B R B B.

©32:00 R L R L R R L R L R R B B R B B R B B R B R B B R B B R B B

6 "Im A Man Groove"

Musical notation for 'Im A Man Groove' on a single staff. The time signature is 4/4. The notation consists of a series of eighth notes, some beamed together, with 'x' marks above them. There are two accents (>) over the second and fourth measures. The piece ends with a repeat sign. Below the staff, the rhythm is transcribed as: R R B L R L R L R F B L F L.

©38:27 R R B L R L R L R F B L F L